

Installing the OXA Quick Change Tool Post

The OXA quick change tool post (QCTP) can be mounted on many small lathes. For some lathes, LittleMachineShop.com includes mounting hardware that makes it a bolt-on installation. For others, some work is required.

On the following pages, you'll find instructions for mounting the OXA QCTP on the following lathes:

- 6" Atlas/Craftsman lathe (P/N 4058 or P/N 3048)

6" Atlas/Craftsman lathe

This is a large genre of lathes, but the OXA QCTP mounts with a T-slot nut on all of them. However, the dimension of the T-slot nut required varies, so you need to measure the width of the top of the T-slot on your compound rest.

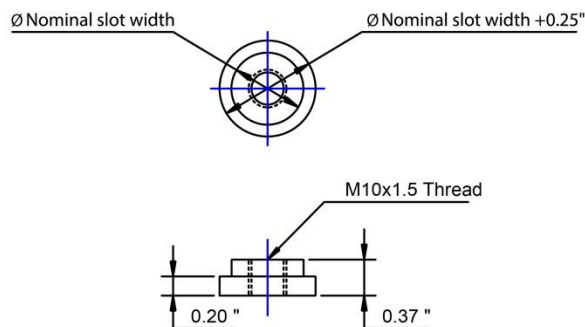
4058 - Quick Change Tool Post Set, OXA for Atlas/Craftsman 6"

This set includes a T-slot nut that fits Atlas/Craftsman lathes with a 5/8" or 3/4" T-slot. This T-slot nut fits most Atlas/Craftsman lathes.

3048 - Quick Change Tool Post Set, OXA, Tormach

If your T-slot is significantly different from either of those dimensions you can make a T-slot nut to fit your lathe.

- You can mill the block of steel that comes on the bottom of the OXA QCTP to make a T-slot nut for your lathe.
- Using your lathe, you can make a T-slot nut like this:



We can't tell you the dimensions, except that the center hole must be tapped M10x1.50 thread. The tap is our P/N 4838. Measure your T-slot and make it an easy fit.